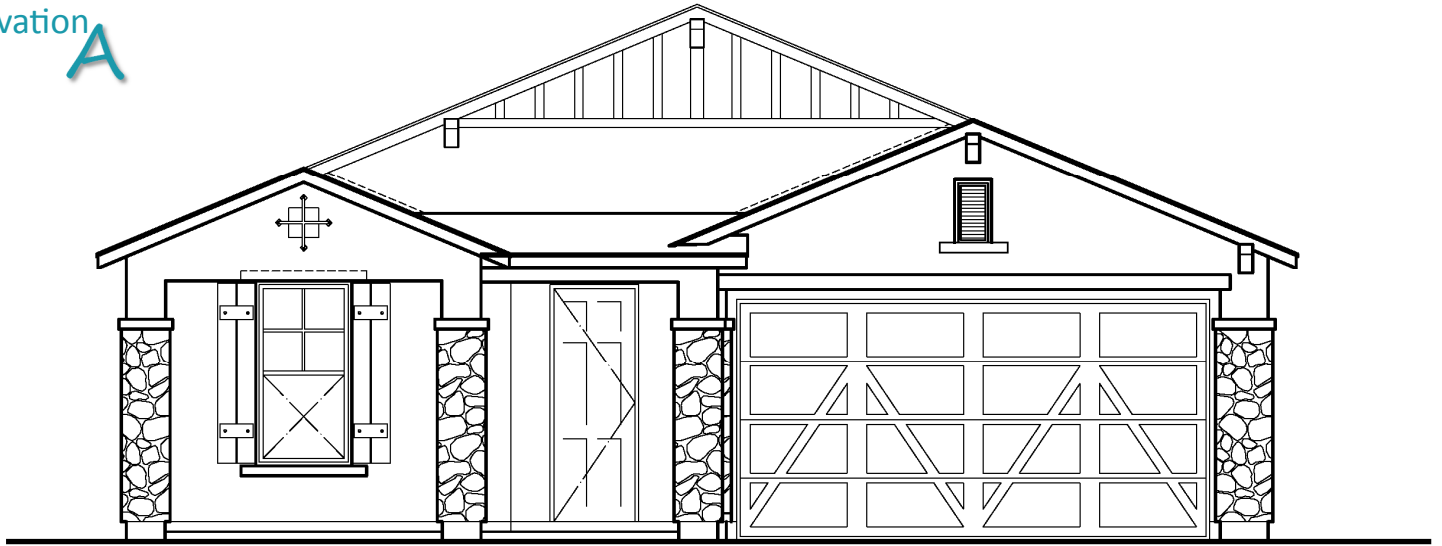


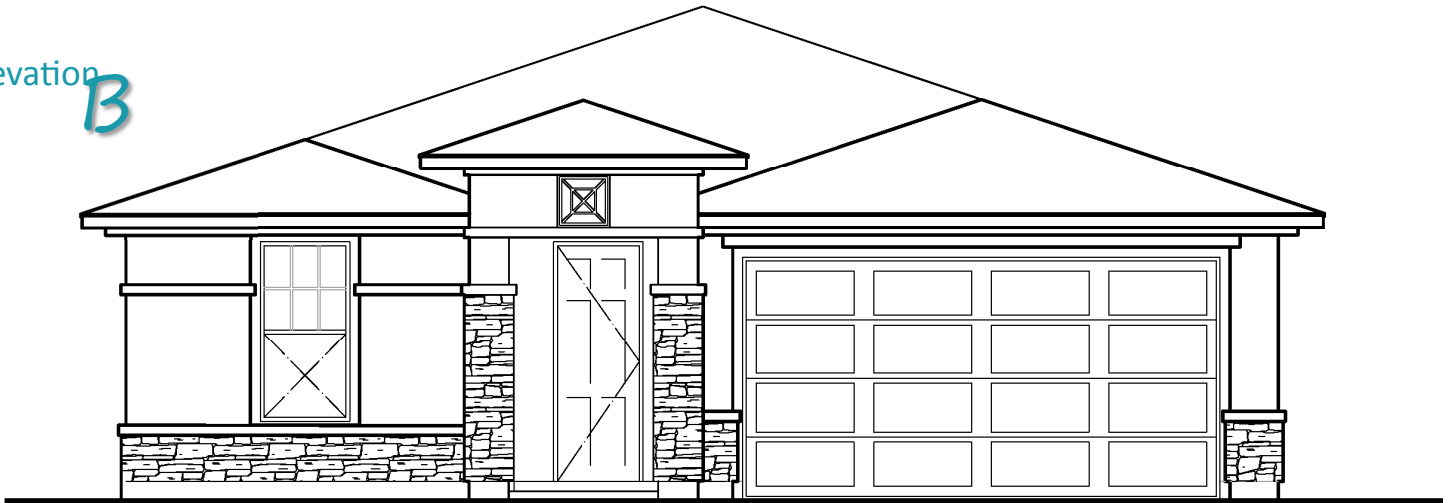
StoneRidge Homes

# WILLOW ❖ 1780 sq. ft.

Elevation **A**



Elevation **B**



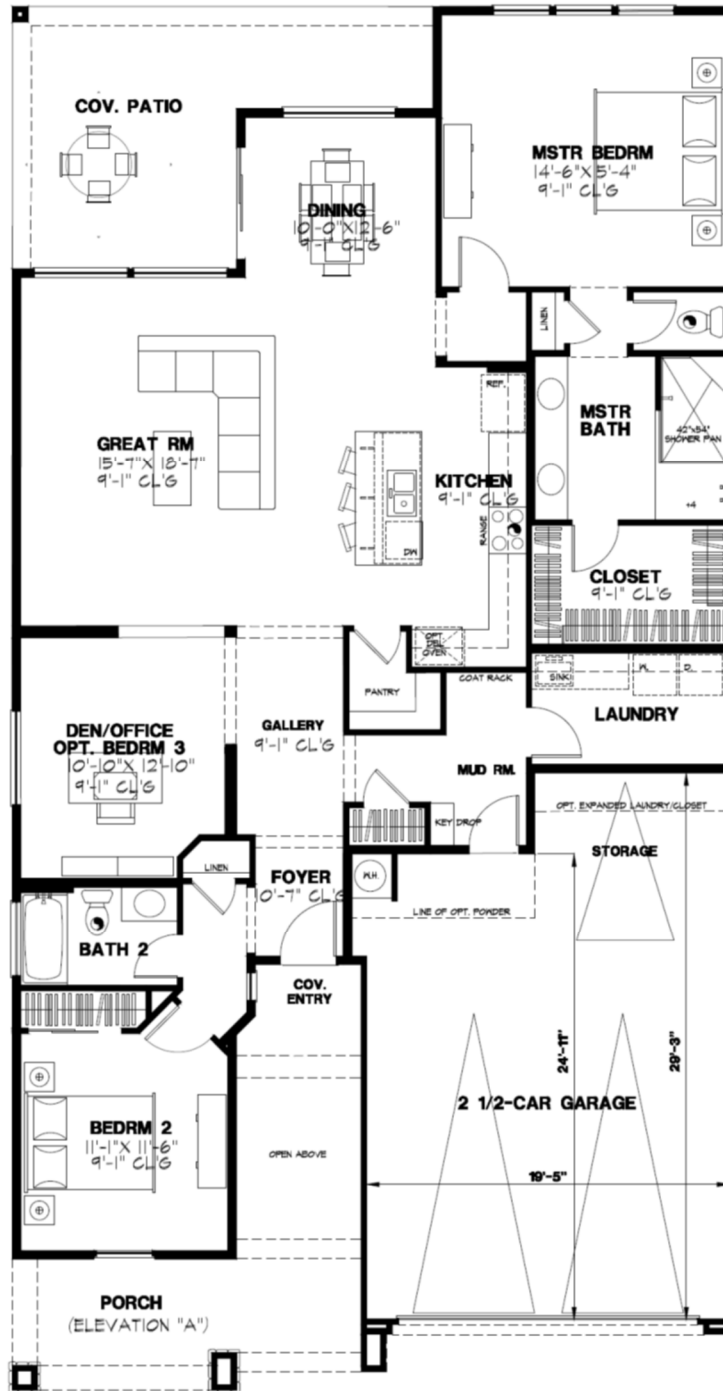
Elevation **C**



StoneRidge Homes

# WILLOW ❖ 1780 sq. ft.

Standard floorplan



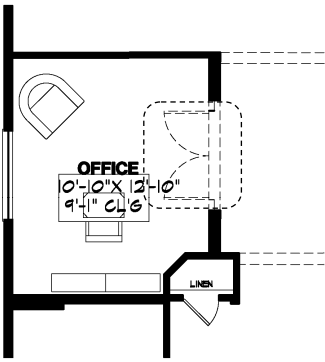
Marketing by West USA



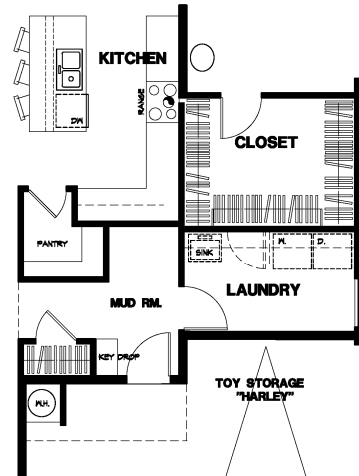
StoneRidge Homes

# WILLOW ❖ 1780 sq. ft.

## Structural Options



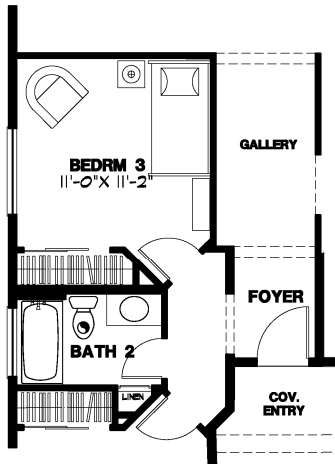
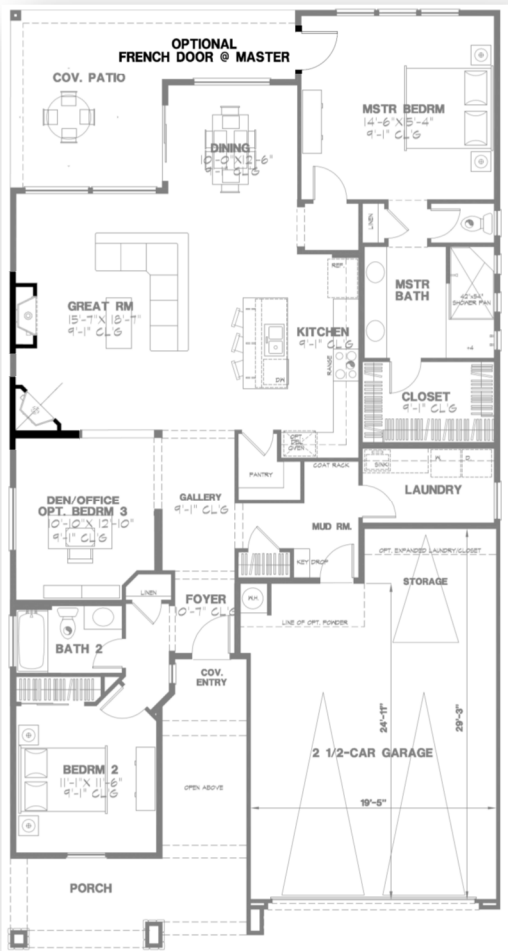
**OPTIONAL OFFICE**



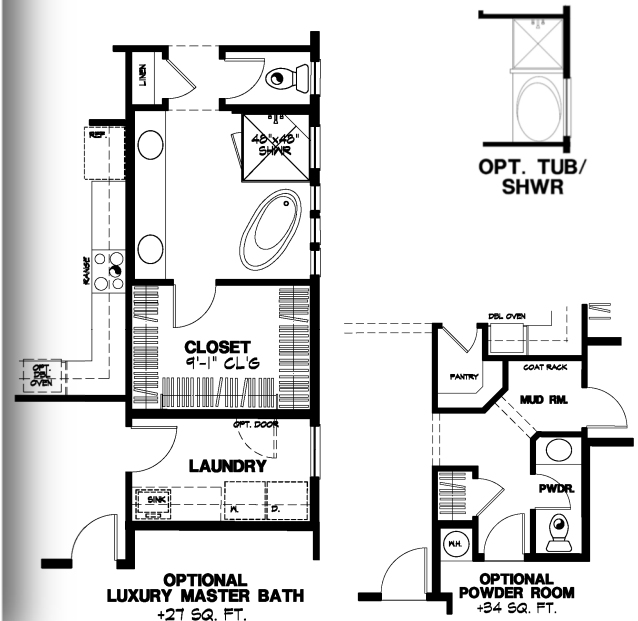
**OPTIONAL EXPANDED MASTER CLOSET**  
+27 SQ. FT.

**OPTIONAL FIRPLACE #1**

**OPTIONAL FIRPLACE #2**



**OPTIONAL BEDROOM 3**



**OPTIONAL LUXURY MASTER BATH**  
+27 SQ. FT.

**OPT. TUB/SHWR**

**OPTIONAL POWDER ROOM**  
+34 SQ. FT.

Marketing by West USA

To continually improve our homes at StoneRidge, we find it necessary to change our standard features and options and/or discontinue certain features and options from time to time. Please see your StoneRidge Homes representative for more details regarding changes. All floorplans and renderings are artist's conceptions and are not intended to be an exact duplication of either the homes or the landscaping. Square footages and room dimensions are approximate. Lot Premiums and HOA fees may apply. Our model homes are decorated to suggest ideas in personalizing your home, and may be constructed with optional items available at additional costs. Prices are subject to change without notice. ROC317559.



# WILLOW ❖ 1780 sq. ft.

## Standard Features

### Construction Features

- 2" x 6" Exterior Wall Construction in most locations
- 14+ Seer Air Conditioner
- High Efficiency Gas Furnace
- Low E Dual-Pane Vinyl Windows
- Covered Patio per plan
- R-23 Insulation on 2" x 6" Exterior Walls
- R-38 blown-in Insulation over Living Area Ceilings

### Exterior Features

- Pavers at Driveway, Entry, Front Walkway & Rear Patio
- Monterey Stucco Finish
- Exterior Stone Accent per plan
- Insulated Garage Walls, Ceilings & Doors
- Garage Door Openers
- Front Landscaping
- Rain Gutters
- 8' Painted Fiberglass Front Door per elevation
- Architectural Roofing Shingles

### Bathroom Features

- Distinctive Natural Stone Granite Countertops
- Shaker Style Recessed Panel Cabinets in Alder
- Under-mount Sinks at Master and Hall Bathrooms
- Delta designer Faucets in Polished Chrome
- Executive Height Vanities
- Pedestal Sink in Powder Room where applicable
- Tiled walk-in Shower at Master Bath

### Interior Features

- 8' Tall Interior Doors
- Solid Core Interior Doors
- Lever style Kwikset Door Hardware in Brushed Nickel
- Designer 5.5" baseboard
- 3.5" door casing
- 18" Tile Flooring in Foyer, Kitchen, Baths, Laundry and Hall
- Carpet in Bedrooms, Great room and Den
- Classic Lighting package in Brushed Nickel
- Recessed LED Can Lighting per Plan
- TV Outlets in Great Room, Master Bedroom and Den
- Phone Jacks in Great Room and Master Bedroom
- Ceiling Fan Pre-wires in Master Bedroom, Great Room and Den
- Recirculating Hot Water
- Painted Closet Shelving
- 30" tall Laundry Cabinets over Washer and Dryer to match Kitchen
- Interior Paint in Velvet Sheen

### Kitchen Features

- Distinctive Natural Stone Granite Countertops
- Designer layout with staggered Upper Cabinets per plan
- Stainless Steel Whirlpool Range, Microwave and Dishwasher
- Dual Compartment Under-mount Stainless Steel Sink
- Spacious Pantry per plan
- Delta Trinsic Kitchen Pull-down Faucet in Polished Chrome
- Garbage Disposal
- Waterline to Refrigerator

### Safety Features

- Smoke Detectors
- Carbon Monoxide Detectors

1300 StoneRidge Drive Suite 101, Prescott Valley, Arizona 86314  
928.775.9111 | [www.StoneRidgeAZ.com](http://www.StoneRidgeAZ.com)