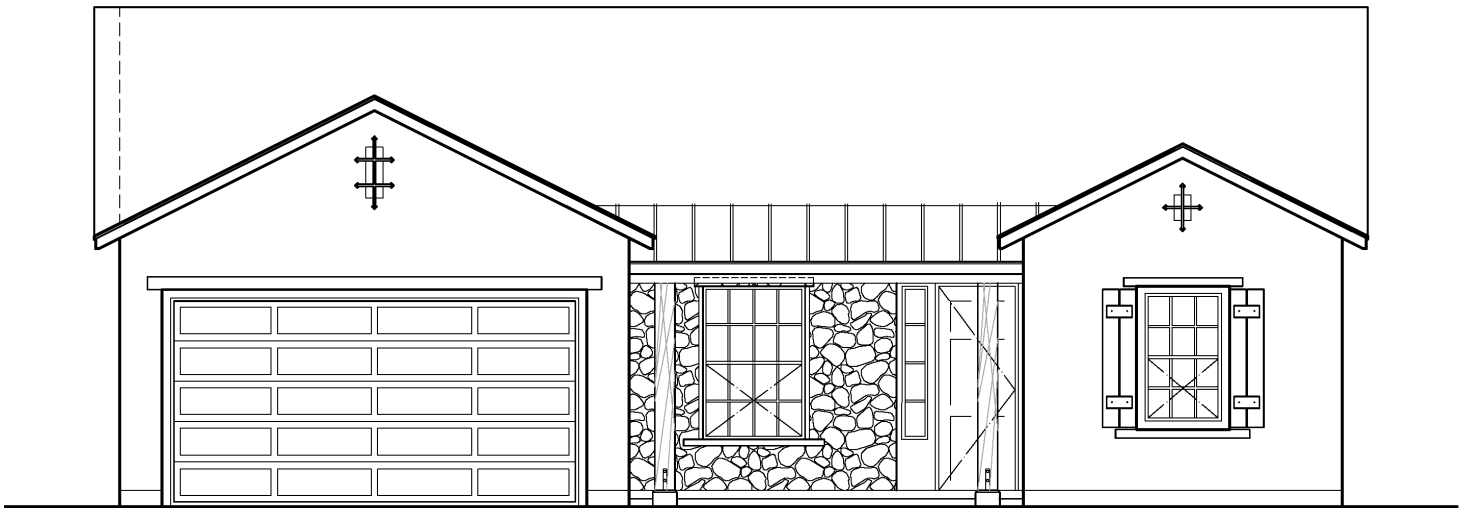


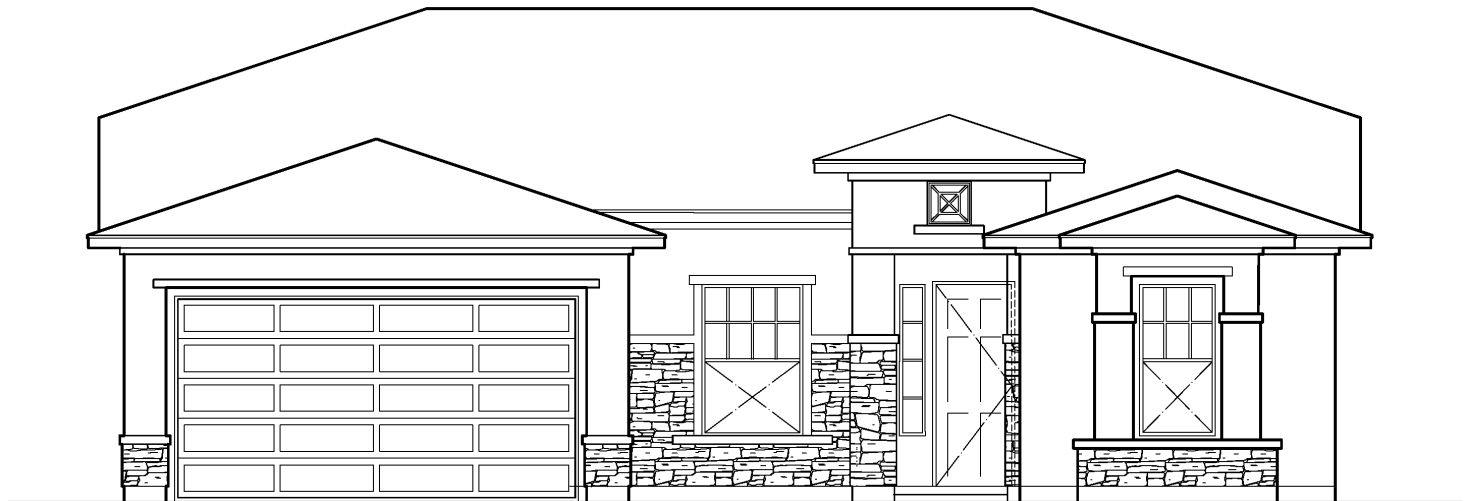
StoneRidge Homes

Aspen ❖ 2204 sq. ft.

Elevation *A*



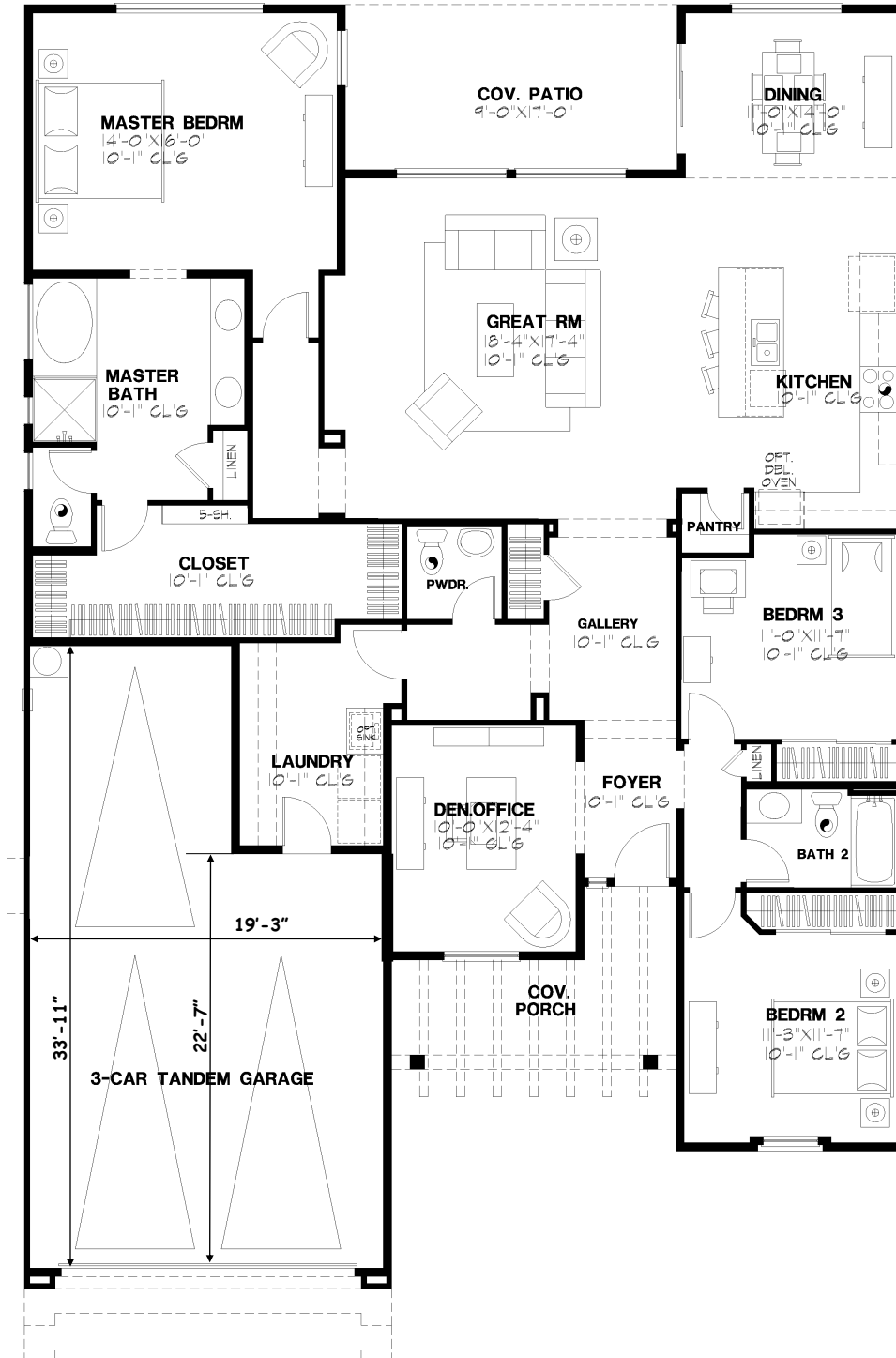
Elevation *B*



StoneRidge Homes

Aspen ❖ 2204 sq. ft.

Standard floorplan

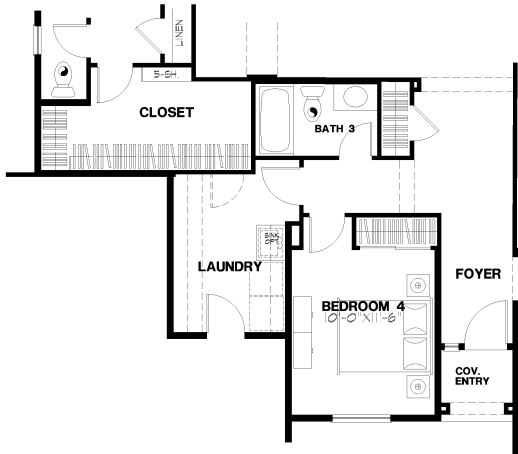


Marketing by West USA

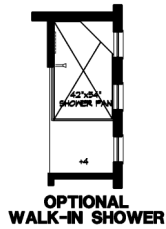
StoneRidge Homes

Aspen ❖ 2204 sq. ft.

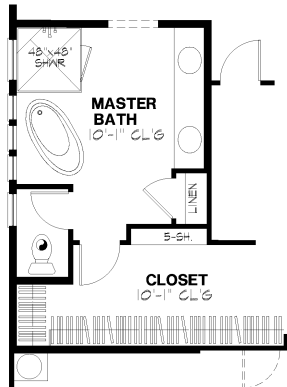
Structural Options



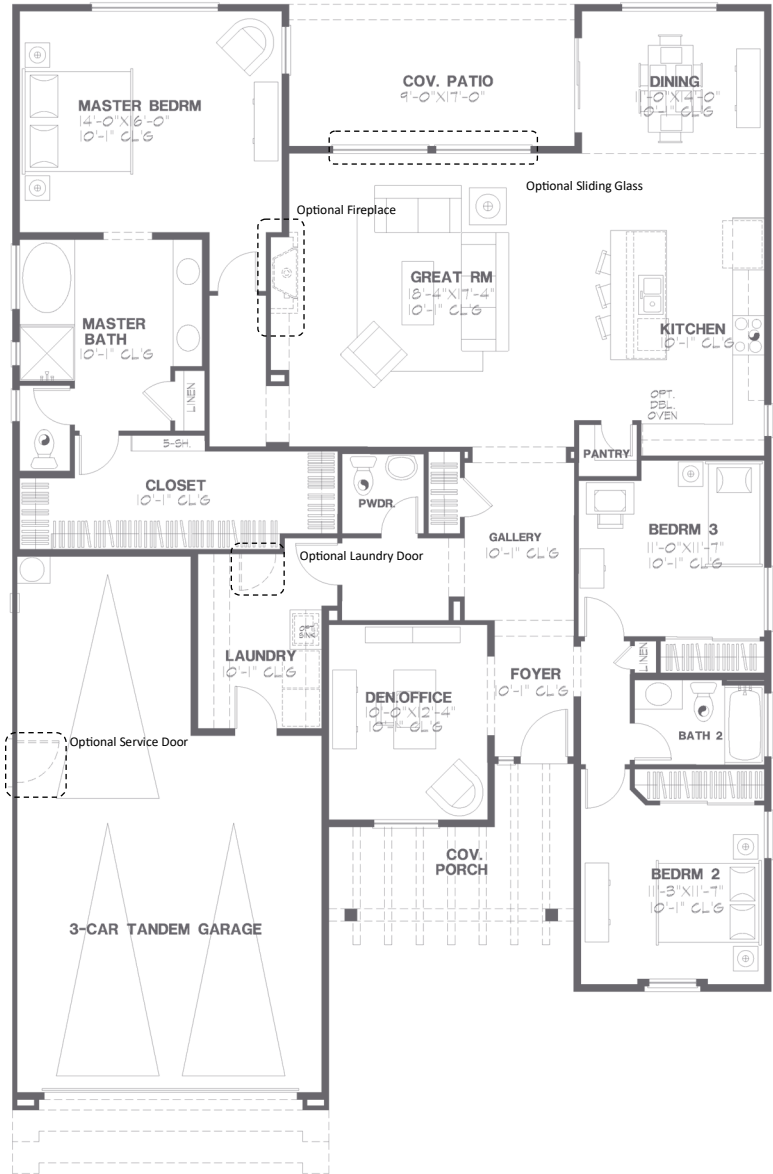
OPT. BEDROOM 4



OPTIONAL WALK-IN SHOWER



OPT. LUXURY BATH



Marketing by West USA

StoneRidge Homes

Aspen ❖ 2204 sq. ft.

Standard Features

Construction Features

- 2" x 6" Exterior Wall Construction in most locations
- 14+ Seer Air Conditioner
- High Efficiency Gas Furnace
- Low E Dual-Pane Vinyl Windows
- Covered Patio per plan
- R-23 Insulation on 2" x 6" Exterior Walls
- R-38 Blown-in Insulation over Living Area Ceilings

Exterior Features

- Pavers at Driveway, Entry, Front Walkway & Rear Patio
- Monterey Stucco Finish
- Exterior Stone Accent per plan
- Insulated Garage Walls, Ceilings & Doors
- Garage Door Openers
- Front Landscaping
- Rain Gutters
- 8' Painted Fiberglass Front Door per elevation
- Architectural Roofing Shingles

Bathroom Features

- Distinctive Natural Stone Granite Countertops
- Shaker Style Recessed Panel Cabinets in Alder
- Under-mount Sinks at Master and Hall Bathrooms
- Delta Designer Faucets in Polished Chrome
- Executive Height Vanities
- Pedestal Sink in Powder Room where applicable
- Tiled Shower and Tub Surrounds
- Tiled Shower floor at Master Bath

Interior Features

- 8' Tall Interior Doors
- Solid Core Interior Doors
- Lever style Kwikset Door Hardware in Brushed Nickel
- Designer 5.5" baseboard
- 3.5" door casing
- 18" Tile Flooring in Foyer, Kitchen, Baths, Laundry and Hall
- Carpet in Bedrooms, Great room and Den
- Security System Pre-Wire
- Classic Lighting package in Brushed Nickel
- Recessed LED Can Lighting per Plan
- TV Outlets in Great Room, Master Bedroom and Den
- Phone Jacks in Great Room and Master Bedroom
- Ceiling Fan Pre-wires in Master Bedroom, Great Room and Den
- Recirculating Hot Water
- Painted Closet Shelving
- 30" tall Laundry Cabinets over Washer and Dryer to match Kitchen
- Interior Paint in Velvet Sheen

Kitchen Features

- Distinctive Natural Stone Granite Countertops
- Designer layout with staggered Upper Cabinets per plan
- Stainless Steel Whirlpool Range, Microwave and Dishwasher
- Dual Compartment Under-mount Stainless Steel Sink
- Spacious Pantry per plan
- Delta Trinsic Kitchen Pull-down Faucet in Polished Chrome
- Garbage Disposal
- Waterline to Refrigerator

Safety Features

- Smoke Detectors
- Carbon Monoxide Detectors

1300 StoneRidge Drive Suite 101, Prescott Valley, Arizona 86314
928.775.9111 | www.StoneRidgeAZ.com

